



### 01 TEWATT SCREW AIR-END

Big rotor, low speed  
Efficient Specific power  
Air-end rotors with 5 years/10000 hours warranty



### 05 INTELLIGENT CONTROLLER

Multi-language display  
Global Smart cloud management system  
GPS/GPRS control  
Full running CVT  
(continuously variable Transmission) system  
Full running Alarm shutdown protection system



### 02 SWEDEN SCANIA ENGINE

Super lower fuel consumption  
Excellent Power to Weight Ratio  
Extremely long lifetime and low  
Maintenance cost  
Tier 4 /EU stage V emission standard



### 06 AIR FILTER SYSTEM

Heavy load air filter system  
Large filtration area, small resistance  
Large dust capacity,  
long replacement cycle



### 03 SWEDEN VOLVO HEAVY DUTY INDUSTRIAL ENGINE

Low fuel consumption, energy conservation,  
environmental protection  
Large power surplus, more stable  
3000 hours/2 years long warranty  
Tier2/Tier3/Tier4/EU stage V emission standard



### 07 INTAKE SYSTEM

Flexible CV Loading/Unloading function  
Anti-vomiting oil one-way function  
Normal closed low load auxiliary start-up function  
Automatic pressure balance system  
Machine life tested More than 1 million time



### 04 CUMMINS ENGINE

Low Buy and Maintenance cost  
Stable and durable performance  
Strong power, fuel saved  
Tier2/Tier3 /Tier4/EU stage V emission standard



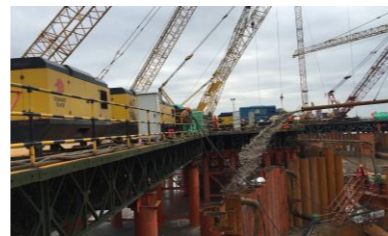
Mine Blasting



Water well drilling



Geothermal drilling



Offshore application



Foundation construction

Brochure doesn't include warranties that are explicit or implied for the products described. Any guarantees or other sales condition would follow Hubei Teweite Power Technology Co.,LTD..Product improvement is our persistent pursuit, TEWATT reserves the modified rights about the design and technical specifications.  
Print Version:202107



CHINA FACTORY  
HUBEI TEWATE POWER TECHNOLOGY CO.,LTD.  
No.20 Fuguang Rd., XiaoNan Economic Development  
Zone, Xiaogan-432100, Hubei, China  
TEL:+86-712-2517118  
FAX:+86-712-2595359  
Web:www.tewatt.com  
Web:www.compressor-tech.com  
Email:003@tewatt.com.cn



# TEWATT DIESEL AIR COMPRESSOR SERIES

# ESSENTIAL POWER ENTIRE SAFEGUARD





## EU Stage V/Tier 4 Final Series



TECHNICAL PARAMETER									
Model	TWT1150D-25T /900D-35T	TWT1200D-35T /1364D-25T	TWT1250D-25T	TWT1150D-25T	TWT750D-13T	TWT750D-21T	TWT406D-7T	TWT375D-12T	TWT185D-7T
Air-end	TEWATT								
Stage	TWO	TWO	TWO	TWO	Single	TWO	Single	Single	Single
Free Air Delivery	CFM 1150/900 m³/min 32.5/25.5	1200/1364 34/39	1250 35.4	1150 32.5	750 21	750 21	406 11.5	375 10.5	185 5.2
Working Pressure	psig 362.5/500 bar 25/35	507.5/362.5 35/25	362.5 25	362.5 25	188.5 13	304.5 21	100 7	175 12	100 7
Screw oil	l 110 gal 24.2	160 35.2	110 24.2	80 17.6	100 22	50 11	20 4.4	20 4.4	20 4.4
Brand	CUMMINS	SCANIA	SCANIA	CUMMINS	VOLVO		CUMMINS	YANMAR	
Model	X12	DC16-314A	DC13-313A	X12	TAD841VE	TAD883VE	F3.8	4NV86CT-PSY	
Power (HP/KW)	513/383	650/478	550/405	513/383	260/185	320/235	121/90	148/110	48/35.5
Rated/Idle Speed (rpm)	1900, 1600/1350	1800, 2050/1350	1800/1350	1800/1350	1950/1350	1900/1350	2200/1350	2000/1350	2200/1600
Cylinders	6	V8	6	6	6		4		4
Bore (mm)	137	130	130	137	110		102		88
Stroke (mm)	169	154	160	169	135		115		90
Displacement (L)	11.8	16.4	12.7	11.8	7.7		3.8		2.189
Emission	EU Stage V								
Battery Voltage(V)	24	24	24	24		24	24		12
Fuel Tank	l 760 gal 200	1200 198	750 165	50	600 132	180 39.6	75 16.5	75 16.5	75 16.5
AdBlue Tank	l 50 gal 13	70 15.4	70 15.4	50 11	50 11	20 4.4	20 4.4	7 1.8	7 1.8
Connector×Qty	3/4"×2,NPT 2"×1	3/4"×1, 2"×1	3/4"×1, 2"×1		3/4"×1, 2"×1	3/4"×1, 2"×1	3/4"×1, 2"×1	3/4"×2	3/4"×2
Wheel×Qty	20×18-16×4	20×18-16×4	20×18-16×4		215/75R16×4	7.00-16×2	165R13×2		
Weight	kg 6000 lb 13220	8000 17637	6500 14330		4500 9921	2450 5401	1200 2646		
Dimension (mm)	4750×2100×2650	5230×2200×2750	4250×2100×2650		4370×1860×2450	4230×2100×2250	3400×1650×1500		
Dimension (L×W×H)	inch 174"×82"×104"	206"×87"×108"	167"×83"×104"		172"×73"×96"	167"×83"×89"	134"×65"×59"		
Noise (dB(A))	80±5	80±5	80±5		75±5	72±5	68±5		
Working Temp. (°C)	-10°C~+50°C (Special Working Conditions Can be Customized)								

### OPTIONAL PARTS:

1. Built-in after cooler and air-water separator meet the special requirements for discharge temperature and quality.
2. Suction fan, to ensure that the air flow to normal operation below -15°C.
3. Free choice of mobile wheels and skid-mounted.

## EU Stage III/Tier 3 Series



TECHNICAL PARAMETER													
Series	VOLVO Series			Cummins Series						YUCHAI Series		YANMAR Series	
Model	TWT1364D-35F /TWT1500D-24F	TWT1525D-25T /1420D-35T	TWT700D-22T	TWT1200D-30T	TWT1300D-35T	TWT1850-24T /950D-17T	TWT605D-17T	TWT750D-21T	TWT680D-20T	TWT550D-16T	TWT1100D-25T	TWT493D-14T	TWT185D(III)-7T
Air-end	TEWATT												
Stage	TWO			TWO						Single	TWO	Single	Single
Free Air Delivery	1364(38.5) /1500(42.5)	1420(40.5) /1525(43.5)	700/20	1200/34	1300/36.8	850 (24) / 950 (27)	605/17	750/21	680/20	550/16	1100/31	493/14	185/5.2
Working Pressure	507.5(35) 348(24)	362.5(25) 507.5(35)	319/22	435/30	507.5/35	348(24) 246.5(17)	246.5/17	304.5/21	290/20	232/16	362.5/25	203/14	100/7
Screw Oil (L)	185	145	90	110	110	90	70	90	80	50	100	50	20
Brand	VOLVO			CUMMINS						YUCHAI		YANMAR	
Model	TAD1643VE-B	TAD1643VE-B	TAD852VE	QSZ13-C550-30	QSZ13-C550-30	QSL8.9-C360-30	QSC5.9-C210-30	QSL8.9-C325-30	QSC8.3-C260-30	QSB5.9-C210-30	YC6MK400-H300	YC4A175-T300	4TNV88
Power (HP/KW)	768/565	768/565	285/210	550/410	550/410	360/264	210/154	325/242	260/194	210/154	400/295	175/129	48/35
Rated/Idle Speed (rpm)	1800, 1900/1350	1800, 1900/1350	1850/1350	1850/1350	1800/1350	1800, 2000/1350	2100/1350	1800/1350	1800/1350	2200/1350	1900/1350	2050/1350	2200/1600
Cylinders	6	6	6	6						6		4	4
Bore (mm)	144	144	110	130	130	114	102	114	114	102	129	108	88
Stroke (mm)	165	165	135	163	163	144.5	120	144.5	135	120	155	132	90
Displacement (L)	16.1	16.1	7.7	13	13	8.9	5.9	8.9	8.3	5.9	12	4.8	2.189
Emission	EU Stage III/Tier 3												
Battery Voltage(V)	24			24						24		12	
Fuel Tank (L)	1060	1000/1200	600	800	800	600	300	600	600	180	800	180	75
Connector×Qty	3/4"×1, 2"×1			3/4"×1, 2"×1						3/4"×1, 2"×1		3/4"×2	
Wheel×Qty	20x12-16x4	20x12-16x4	215/75R16x4	215/75R17.5x4	ST235/80R16x4	215/75R16x4	235/80R16x2	215/75R16x4	215/75R16x4	7.00-16x2	ST235/80R16x4	7.00-16x2	165R13x2
Weight (kg)	7000/7500	8000	4500	5500(6000)	6500(7000)	4500	3000	4500	4500	2300/2500	5500/6000	2300/2500	1200
Dimension (mm)	4800×2200×2510	/	/	3900×2100×2300	4200×2100×2300	3900×1860×2000	2700×1550×1700	/	/	3000×1500×1600	3900×2100×2300	3000×1500×1600	/
Dimension (mm)	5350×2200×2810	5300×2200×2750	4370×1860×2450	4250×2100×2650	4550×2100×2650	4370×1860×2450	3950×2050×1980	4370×1860×2450	4370×1860×2450	4230×2100×2000	4300×2100×2800	4230×2100×2100	3400×1650×1500
Noise (dB(A))	85±5	85±5	80±5	72±5	85±5	75±5	85±5	85±5	85±5	72±5	85±5	72±5	68±5
Working Temp. (°C)	-10°C~+50°C (Special Working can be Customized)												

4. Ultra-low temperature auxiliary start amplifier.
5. Engine cooling water heating system.
6. High and low double pressure switching mode.

## EU Stage II/Tier 2 Series



TECHNICAL PARAMETER						
Model	TWT1100D-35T /TWT1250D-25T	TWT750D-13T	TWT900D-21T	TWT375D-10T	TWT493D-14T	TWT550D-16T
Air-end	TEWATT					
Stage	TWO	Single	TWO	Single		
Free Air Delivery	1100(31)/1250(35.4)	750/21	900/25.5	375/10.6	493/14	550/16
Working Pressure	507.5(35)/362.5(25)	188.5/13	304/21	145/10	203/14	232/16
Screw Oil (L)	110	70	90	50		
Brand	CUMMINS					
Model	QSZ13-C550-II	6CAT8.3-C260 II	6LTAA8.9-C360	6BTA5.9-C150-30	6BTA5.9-C180-33	6BTA5.9-C210-30
Power (HP/KW)	550/410	260/194	360/264	150/113	180/133	210/154
Rated/Idle Speed (rpm)	(1700/1350)/(1850/1350)	1900/1350	1900/1350	2000/1350	2050/1300	2200/1350
Cylinders	6	6	6	6	6	6
Bore (mm)	130	114	114	102	102	102
Stroke (mm)	163	135	144.5	120	120	120
Displacement (L)	13	8.3	8.9	5.9	5.9	5.9
Emission	EU Stage II/Tier 2					
Battery Voltage(V)	24					
Fuel Tank (L)	800	600	600	120	120	120
Connector×Qty	3/4"×1, 2"×1					
Wheel×Qty	ST235/80R16×4	215/75R16×4		7.00-16×2		
Weight (kg)	6000/5500	4000	4500	2300/2500		
Dimension (mm)	3900×2100×2300 / 4300×2100×2800	/		3000×1500×1900		
Dimension (mm)	4300×2100×2800	4370×1860×2450		4230×2100×2040		
Noise (dB(A))	80±5	75±5		72±5		
Working Temp. (°C)	-10°C~+50°C (Special Working Conditions Can be Customized)					

### Remark:

1. Above listed models are some common models, if need other models, please contact our sales for details.
2. Above parameters for reference only, specifications are subject to change without further notice.
3. Those machine used in harsh environment also can be customized.